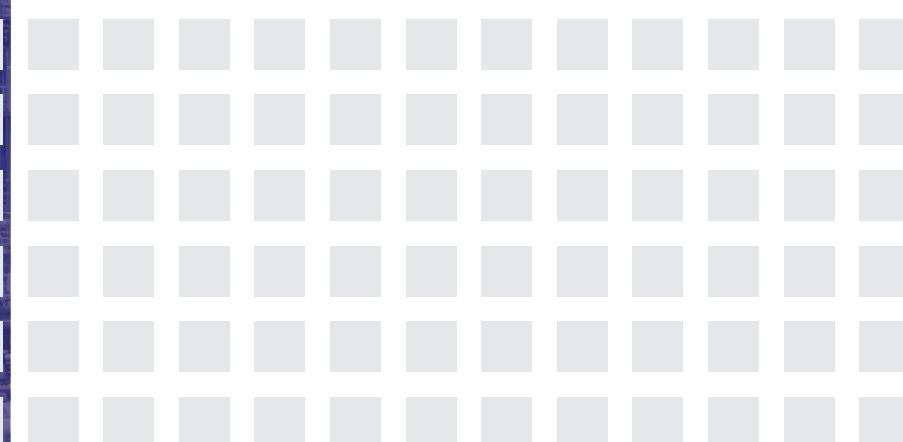




产品手册

Product Manual



Hebei Yuanke Pipeline Manufacture Co., Ltd.
河北源科管道制造有限公司

YUANKE



Hebei Yuanke Pipeline Manufacture Co., Ltd.

<https://www.ykpipeline.com>

Phone/ Whatsapp: 086 186 4091 7967

E-mail: sales@ykpipeline.com



Hebei Yuanke Pipeline Manufacture Co., Ltd.



YUANKE PIPELINE IN BRIEF

Hebei Yuanke Pipe Manufacturing Co., Ltd. is a pipe manufacturer integrating production and import and export sales. Its production plant is located in Yanshan County, Hebei Province, China's largest pipe fittings base. It has the right to import and export. In addition to supplying domestic large-scale enterprises such as oil, offshore oil, shipyards, chemicals, power plants, urban heating, and water treatment, its products are also exported to Italy, Chile, Argentina, Australia, Singapore, Thailand, Bangladesh, Russia, the United Arab Emirates, Iran, Iraq, Kazakhstan, Turkmenistan, Nigeria, Brazil and other countries and regions.

Our company's products mainly include elbow, tee, cross, reducer, cap, buttwelding fittings, flange, steel pipe, socket fittings, pipe spools, joints and other products. Materials include carbon steel, pipeline steel, alloy steel, stainless steel, duplex stainless steel, special steel, etc. Production standards include GB, HG, SY, SH, GD, DL, ASME, ANSI, MSS-SP, API, AWWA, DIN, BS, EN, JIS, GOST, AS, Norsok, ISO and other non-standard pipe fittings according to drawings. Our company holds qualification certificates such as Production License of Special Equipment and ISO 9001 certification.

Our company's main advantageous products: pipe fittings and flange products for sour environment service that meet NACE MR0175 standard and can provide HIC and SSCC tests; corrosion-resistant duplex stainless steel and high-grade stainless steel pipe fittings and flange products; thick-walled 16MO3\P11\P22\P1\P5\P9\P91\92\WB36 and other pipe fittings and flange products; WPHY 42/52/60/65/70/80, WPL3/WPL6 and other oil pipeline and low-temperature pipe fittings and flange products; API 6A 6B flanges, compact flanges, swivel flanges, anchor flanges, split flanges, insulating flanges, spectacle blind flanges, etc.

YUANKE PIPELINE



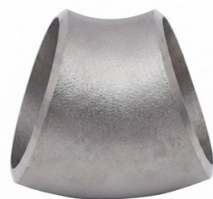
90° 长半径弯头
90° LR Elbow



45° 长半径弯头
45° LR Elbow



90° 短半径弯头
90° SR Elbow



45° 短半径弯头
45° SR Elbow



椭圆管帽
Ellipsoidal Cap



半球形管帽
Hemispherical Cap



碟形管帽
Torispherical Dish Cap



翻边短节
Lap Joint Stub End



180° 长半径弯头
180° LR Elbow



180° 短半径弯头
180° SR Elbow



异径弯头
Reducing Elbow



弯管
Bends



对开三通
Split Tee



顺水三通
Sweep Junction



Y型三通
Y type Tee



格栅三通
Barred Tee



等径三通
Equal Tee



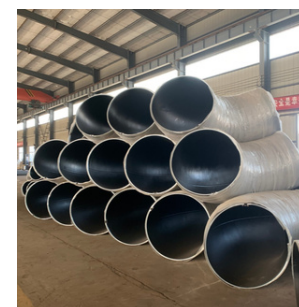
异径三通
Reducing Tee



四通
Cross



45°斜三通
Lateral Tee



大口径对焊弯头
Large Diameter BW Elbow



虾米腰弯头
Miter Elbow



同心大小头
Concentric Reducer



偏心大小头
Eccentric Reducer



锥管
Tapered Pipe



大尺寸焊接大小头
Large-sized Welding Reducers

主要生产标准 Main Standard

<p>国标 Chinese</p>	<p>GB/T 12459 , GB/T 13401 SH/T 3408, SH/T 3409 石化标准 SY/T 0609 石油标准 HG/T 21635 , HG/T 21631 化工标准 GD 87, GD 2000 电力标准 GB/T 10752 船舶标准</p>
<p>美标 American (Oil & Gas Dominant)</p>	<p>Process Fittings: ASME B16.9 Short Radius Elbows: ASME B16.28 Induction Bends: ASME B16.49 High Yield / Pipeline: MSS SP-75 Stainless / Thin Wall: MSS SP-43 Water Works: AWWA C208</p>
<p>欧标(德/英) European (DIN / EN)</p>	<p>EN 10253-1; EN 10253-2; EN 10253-3/4 German: DIN 2605 (Elbows), DIN 2615 (Tees), DIN 2616 (Reducers), DIN 2617 (Caps) British: BS 1640 , BS 1965</p>
<p>俄标 Russian / GOST</p>	<p>GOST 17375, GOST 30753, GOST 17376, GOST 17378, GOST 17379, OST 34.10.xxx / OST 36.xx Series</p>
<p>日韩及澳洲 Asian & Oceanian</p>	<p>Japan: JIS B2311, JIS B2312, JIS B2313 Korea: KS B 1522, KS B 1541 Australia: AS 1640</p>
<p>其他特殊标准 Specialized</p>	<p>Offshore Piping: EEMUA 234, EEMUA 146 Hydraulic: SAE J514</p>

主要材质 Main Material

<p>碳钢&低温钢 Carbon & LTCS</p>	<p>Carbon Steel: ASTM A234 WPB, WPC Low Temp. Carbon Steel : ASTM A420 WPL6, WPL3</p>
<p>管线钢 Pipeline Steel</p>	<p>MSS SP-75 / ASTM A860: WPHY 42, 46, 52, 56, 60, 65, 70 (Typically matches API 5L X-grades)</p>
<p>合金钢 Alloy Steel</p>	<p>ASTM A234 WP1, WP5, WP9, WP11 (Cl.1 & 2), WP12, WP22, WP91, WP92 16Mo3, 13CrMo4-5, 10CrMo9-10, X10CrMoVNb9-1</p>
<p>不锈钢 Stainless Steel</p>	<p>ASTM A403 WP304/WP304L, WP316/WP316L, WP321/WP321H, WP347/WP347H, WP310S, WP317L, WP904L</p>
<p>双相钢 Duplex Steel</p>	<p>Duplex: ASTM A815 UNS S31803 / S32205 (2205) Super Duplex: ASTM A815 UNS S32750 (2507), UNS S32760 (Zeron 100)</p>
<p>镍基合金及非铁基材料 Nickel Alloys & Non-Ferrous</p>	<p>Nickel 200/201, Monel 400, Inconel 600 / 625, Incoloy 800 / 800H / 825, Hastelloy C276 Copper-Nickel (Cu-Ni): EEMUA 146 / DIN 86088 (90/10 C70600), 70/30 (C71500) Titanium: ASTM B363 Gr.2 (WPT2), Gr.5 (WPT5) Aluminium: ASTM B361 1050, 5083, 6061</p>



对焊法兰
Weld-neck Flange



平板法兰
Plate Flange



承插法兰
Socket-Welding Flange



活套法兰
Slip-on Flange



八字盲板
Spectacle Blind



插板
Paddle Blank



插环
Spacer



管板
Tube Sheet



螺纹法兰
Thread-Flange



松套法兰
Lapped Flange



盲板
Blind



长高颈法兰
Straight Hun Welding Flange



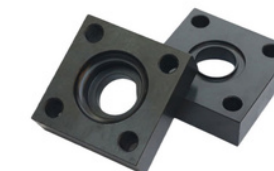
锚固法兰
Anchor Flange



绝缘法兰
Insulating Flange



绝缘接头
Insulating Joint



方形法兰
Square Flange



变径法兰
Reducing Flange



夹套法兰
Jacketed Flange



孔板法兰
Orifice Flange



旋转法兰
Swivel-Flange



分体液压法兰
Split Flange



快开盲板
Quick Action Line Blind



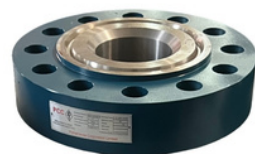
来图加工异形法兰
Process special-shaped flanges
based on provided drawings



紧凑型法兰
Compact Flange



堆焊法兰
Cladding Flange



API 6B法兰
API 6B Flange



载丝法兰(DSA)
Double Studded Adapter

主要生产标准 Main Standard	
国标 Chinese	GB/T 9112 ~ GB/T 9124, GB/T 13402 HG/T 20592, HG/T 20615, HG/T 20635, HG/T 21547 化工标准 GB/T 2503 ~ GB/T 2506 船舶标准
美标 American (Oil & Gas Dominant)	Process Flanges: ASME B16.5, ASME B16.47 (Series A & B, Covers API 605 & MSS SP-44) Line Blinds: ASME B16.48 (Spectacle Blinds) Orifice Flanges: ASME B16.36 High Pressure / Wellhead: API 6A (Type 6B & 6BX) Water Works: AWWA C207
欧标 European	EN 1092-1 German: DIN 2527, DIN 2573/2576, DIN 2630-2638 Italian: UNI 2276-2278, UNI 6091-6099 British: BS 4504, BS 10
俄标 Russian / GOST	GOST 33259-2015 GOST 12820-80, GOST 12821-80, GOST 12836, ATK 24.200.02-90
日韩及澳洲 Asian & Oceanian	Japan: JIS B2220, Korea: KS B 1503 Australia: AS 2129, AS 4087
其他特殊标准 Specialized	Off-shore Piping: EEMUA 234 (EEMUA 145) Hydraulic Flanges: SAE J518 / ISO 6162 Compact Flanges: ISO 27509 / NORSOK L-005 / ASME Code Case 2904 South Africa: SABS 1123 Insulating Joint: SY/T 0516, ASME Section VIII, Div 1

主要材质 Main Material	
碳钢&低温钢 Carbon & LTCS	Carbon Steel: ASTM A105 / A105N Low Temp. Carbon Steel : ASTM A350 LF1, LF2, LF3, LF6, ASTM A516 Gr.60 / Gr.70
管线钢 Pipeline Steel	ASTM A694: F42, F46, F52, F56, F60, F65, F70 (Typically matches API 5L X-grades)
合金钢 Alloy Steel	ASTM A182: F1, F5, F9, F11, F12, F22, F91, F92 16Mo3, 13CrMo4-5, 10CrMo9-10, 15CrMo, X10CrMoVNb9-1
不锈钢 Stainless Steel	ASTM A182 F304/F304L, F316/F316L ASTM A182 F321/F321H, F347/F347H, F310S ASTM A182 F317L, F904L (Uranus B6) ASTM A182 F44 (UNS S31254 / 254 SMO)
双相钢 Duplex Steel	Duplex: ASTM A182 F51 / F60 (UNS S31803 / S32205 / 2205) Super Duplex: ASTM A182 F53 (UNS S32750 / 2507), F55 (UNS S32760 / Zeron 100)
镍基合金及非铁基材料 Nickel Alloys & Non-Ferrous	Nickel 200/201, Monel 400, Inconel 600 / 625, Incoloy 800 / 800H / 825, Hastelloy C276 Copper-Nickel (Cu-Ni): 90/10 (C70600), 70/30 (C71500) Titanium: ASTM B381 Gr.2, Gr.5 Aluminium: ASTM B247 1050, 1060, 1100, 5083-H112, 6061-T6



90°承插弯头
90° Socket Weld Elbow



45°承插弯头
45° Socket Weld Elbow



承插管箍
Socket Weld Coupling



承插管帽
Socket Weld Cap



六角补芯
Hexagonal Bushing



六角外丝
Nipple BSPT



双丝头
Pipe Nipple



缩颈管
Swage Nipple



承插三通
Socket Weld Tee



承插四通
Socket Weld Cross



承插斜三通
Socket Weld Lateral



承插活接头
Socket Weld Union



四方头堵
Square Head Plug



六角堵头
Hexagonal Head Plug



圆头堵头
Round Head Plug



承插支管台
Socketlet



90°螺纹弯头
90° Threaded Elbow



45°螺纹弯头
45° Threaded Elbow



螺纹管箍
Threaded Coupling



螺纹管帽
Threaded Cap



螺纹支管台
Threadolet



对焊支管台
Weldolet



法兰支管台
Flanged Olets



短管支管台
Nipolet



螺纹三通
Threaded Tee



螺纹四通
Threaded Cross



螺纹斜三通
Threaded Lateral



螺纹活接头
Threaded Union



弯头支管台
Elbolet



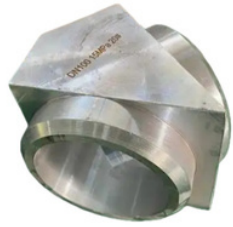
斜支管台
Latrolet



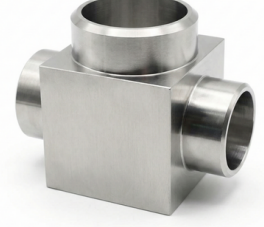
马鞍座
Sweepolet



高压90°弯头
High-pressure 90° Elbow



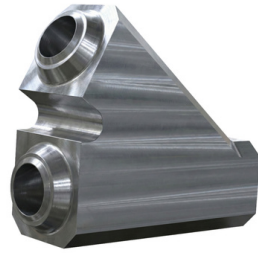
高压45°弯头
High-pressure 45° Elbow



锻制高压三通
High-pressure Tee



锻制高压四通
High-pressure Cross



锻制高压斜三通
High-pressure Lateral

主要生产标准 Main Standard

国标 Chinese	GB/T 14383 , GB/T 14626 SH/T 3410 HG/T 21634 GD 87, GD 2000
美标 American	ASME B16.11 MSS SP-79, MSS SP-83, MSS SP-95, MSS SP-97 ASME B1.20.1 (NPT)
欧标 European	BS 3799 EN 10241 ISO 7-1 (BSPT / Rc), ISO 228 (BSPP / G)
俄标 Russian / GOST	GOST 8966 GOST 8969
日韩 Asiann	JIS B2316 KS B 1542

主要材质 Main Material

碳钢&低温钢 Carbon & LTCS	Carbon Steel: ASTM A105 / A105N Low Temp. Carbon Steel : ASTM A350 LF2, LF3
管线钢 Pipeline Steel	ASTM A694 F42, F46, F52, F56, F60, F65, F70
合金钢 Alloy Steel	ASTM A182 F1, F5, F9, F11 (Cl.2), F12, F22, F91, F92
不锈钢 Stainless Steel	ASTM A182 F304/F304L, F316/F316L ASTM A182 F321/F321H, F347/F347H, F310S ASTM A182 F317L, F904L
双相钢 Duplex Steel	ASTM A182 F51 (UNS S31803), F60 (UNS S32205) ASTM A182 F53 (2507), F55 (Zeron 100)
镍基合金及 非铁基材料 Nickel Alloys & Non-Ferrous	Nickel 200/201: ASTM B564 UNS N02200 / N02201 Monel 400: ASTM B564 UNS N04400 Inconel 600 / 625: ASTM B564 UNS N06600 / N06625 Incoloy 800 / 825: ASTM B564 UNS N08800 / N08825 Hastelloy C276: ASTM B564 UNS N10276 Titanium: ASTM B381 F-2, F-5 Aluminum: ASTM B247



全螺纹螺柱&重型螺母
Stud Bolt & Heavy Hex Nuts



双丝头螺柱
Double End Stud



六角头螺栓
Hex head bolts



特氟龙涂层螺栓
Teflon-coated Bolt



铝陶瓷涂层螺栓
Xylar Coated Bolt



达克罗涂层螺栓
Dacromet Coated Bolt



吊环螺栓
Eye Bolt



U型螺栓
U-Bolt



U型螺栓带涂层
Rubber & PVC Coated U-Bolt



金属膨胀螺栓
Metal Expansion Bolt



垫环&弹簧垫
Flat Washer & Spring Washer

主要生产标准 Main Standard

国标 Chinese	GB、HG、SH、NB、JB
美标 American	ASME B18.2.1, ASME B18.2.2
欧标 European	DIN 933, DIN 934
俄标 Russian	GOST R 52643, GOST R 52644, GOST R 52645
国际标准 ISO	ISO 4016, ISO 4017, ISO 4032, ISO 4033, ISO 13918

涂层与表面处理 Coatings & Surface Treatment

底层/镀层 Base Layer / Plating	发黑 Black Oxide 电镀锌 Zinc plating, Zn-Ni plating 热浸锌 HDG 达克罗 Dacromet 锌/锰 磷化 Zinc/Manganese Phosphate 铝陶瓷涂层 Xylar 2
面层 Top Layer	PTFE特氟龙涂层 Xylan 1424, Xylan 1014, Xylan 1070, Xylan 1052, Xylan 1427
涂层颜色 Layer Color	Blue (蓝色), Green (绿色), Yellow (黄色), Red (红色), Black (黑色)

主要材质 Main Material

	螺栓 Bolt	螺母 Nut
碳钢与合金钢 Carbon & Alloy Steel	<ul style="list-style-type: none"> • A193 Gr.B7、 B7M、 B16 • A320 Gr.L7、 L7M、 L43 • A307 Gr.A、 B • A325/A325M TYPE 1 • A490/A490M TYPE 1 • F1554 Gr.36、 55、 105 • A540 Gr.B21、 B22、 B23、 B24 • ISO 898-1/GB 3098-1/GOST R 52627 • Gr.4.8、 5.6、 5.8、 8.8、 10.9、 12.9 • 30CrMo/35CrMo 	<ul style="list-style-type: none"> • A194 Gr.2H、 2HM、 4、 7、 7M • A563 Gr.O、 A、 B、 C、 D、 DH、 DH3 • A563M Gr.5、 9、 8S、 10S、 12、 8S3、 10S3 • ISO 898-2/GB3098-2/GOST R • 52628 Gr.4、 5、 8、 10、 12
不锈钢 Stainless Steel	<ul style="list-style-type: none"> • A193 Gr.B8 (S30400)、 B8C (S34700)、 B8M (S31600)、 B8T (S32100)、 B8MLCuN (S31254) • A320 Gr.B8 (S30400)、 B8C (S34700)、 B8M (S31600)、 B8T (S32100) • ISO 3506-1/GB 3098.6 Gr.A2-70、 A4-70、 A2-80、 A4-80 • F593 S304、 S304L、 S316、 S316L • A453 Gr.660A、 660B、 660C、 660D 	<ul style="list-style-type: none"> • A194 Gr.8 (TP304)、 8C (TP347)、 8M (TP316)、 8T (TP321)、 8MLCuN (S31254) • ISO 3506-2/GB 3098.15 Gr.A2-70、 A4-70、 A2-80、 A4-80 • F594 S304、 S304L、 S316、 S316L
双相钢 Duplex Steel	Duplex: ASTM A1082 UNS S31803 / S32205 (2205) Super Duplex: ASTM A1082 UNS S32750 (2507), UNS S32760 (Zeron 100)	
镍基合金 Nickel Alloys	Nickel 200/201, Monel 400, Inconel 600 / 625, Incoloy 800 / 800H / 825, Hastelloy C276	



金属缠绕垫片
spiral wound gasket



金属环垫
Ring Joint Gasket



金属平垫
Flat Metal Gasket



聚四氟乙烯垫片
PTFE Gasket



石棉垫片
Asbestos Gasket



玻璃纤维垫片
Glass Fiber Gasket



无石棉垫片
Non-Asbestos Gasket



橡胶垫片
Rubber Gasket



石墨垫片
Graphite-Ring



绝缘垫片
Insulating Gasket



绝缘套件
Insulation Kit

主要生产标准 Main Standard

国标 Chinese	HG/T, GB/T
美标 American	ASME B16.20, ASME B16.21
欧标 European	EN 1514-1~EN 1514-7

主要材质 Main Material

非金属垫片 Non-Metallic Gasket	<ul style="list-style-type: none"> • 聚四氟乙烯 PTFE • 橡胶 EPDM, NBR, Neoprene • 柔性石墨 Flexible Graphite、 • 无石棉纤维 Non-Asbestos Fiber • 石棉 Asbestos
金属缠绕垫片 Spiral Wound Gasket	<ul style="list-style-type: none"> • 金属材料 Metal: SS304, SS316L, SS321, Monel • 填料 Filler: 柔性石墨 Graphite, PTFE, 云母 Mica
金属环垫 Metallic Ring Gasket	<ul style="list-style-type: none"> • 软铁 Soft Iron • 低碳钢 Low Carbon Steel • SS304, SS316, SS321, SS347, SS410 • 5% Chrome (F5), Monel, Inconel